

Important Tips

Your needs and those of your family should be the primary factors considered when determining the timing of your evacuation. If you must evacuate, do not delay your departure in anticipation of the opening of the contraflow lanes. Should the contraflow be activated, citizens will be advised through local radio and television stations. All citizens should prepare a plan well in advance of the evacuation.

The following steps are recommended:

- ✓ Assemble your disaster supplies kit with items such as flashlights, cell phones, extra batteries, battery chargers, portable radio, first aid kit, emergency water and food, medical supplies and equipment, non-electric can opener, highway map, important documents, such as insurance and medical information, etc.
- ✓ Secure your home against disaster to help reduce damages. Cover windows with shielding materials. Secure or put up any loose objects from around your home.
- ✓ If you cannot take your pets with you, make provisions for them.
- ✓ Know your area's evacuation plan/routes before you leave home (www.texasonline.com).
- ✓ Fill your vehicle with gas as early as possible. Take only the vehicle necessary to transport you and your family to safety. Extra vehicles create congestion.
- ✓ Bring extra cash in case banks are closed and ATMs are not working.
- ✓ Notify family and friends (especially those out the area) of your plan and your destination.
- ✓ Develop an emergency plan in case family members are separated. Instruct all evacuating family members of the name and contact information of your designated out-of-area friend or family.
- ✓ Ensure children know how and when to call 9-1-1.
- ✓ Evacuate, traveling safely to your destination.
- ✓ Expect travel times to destinations to be significantly longer than normal.

After the storm, listen to local officials for the all-clear signal before returning home. Check for information at www.texasonline.com.

Do not try to drive through standing water. Just a few inches can float a vehicle.

Fender-Bender?

State law requires motorists to move fender-bender accidents out of the travel lanes to the shoulder of the road. To keep all travel lanes and shoulders clear, however, disabled vehicles on the shoulder will be relocated to the next exit ramp where further assistance may be available.

More information on hurricane preparedness and evacuation safety is available from the following:

Shelters and special needs:
Call **2-1-1**

State of Texas:
www.texasonline.com

Texas Department of Transportation:
www.txdot.gov
Highway Road Conditions and
Evacuation Routes: **1-800-452-9292**

Texas Department of Public Safety:
www.txdps.state.tx.us

Governor's Division of Emergency
Management:
www.txdps.state.tx.us/dem

American Red Cross:
www.redcross.org
1-800-RED-CROSS (733-2767)

RIO GRANDE VALLEY

TEXAS



**Hurricane Evacuation
Contraflow Route**

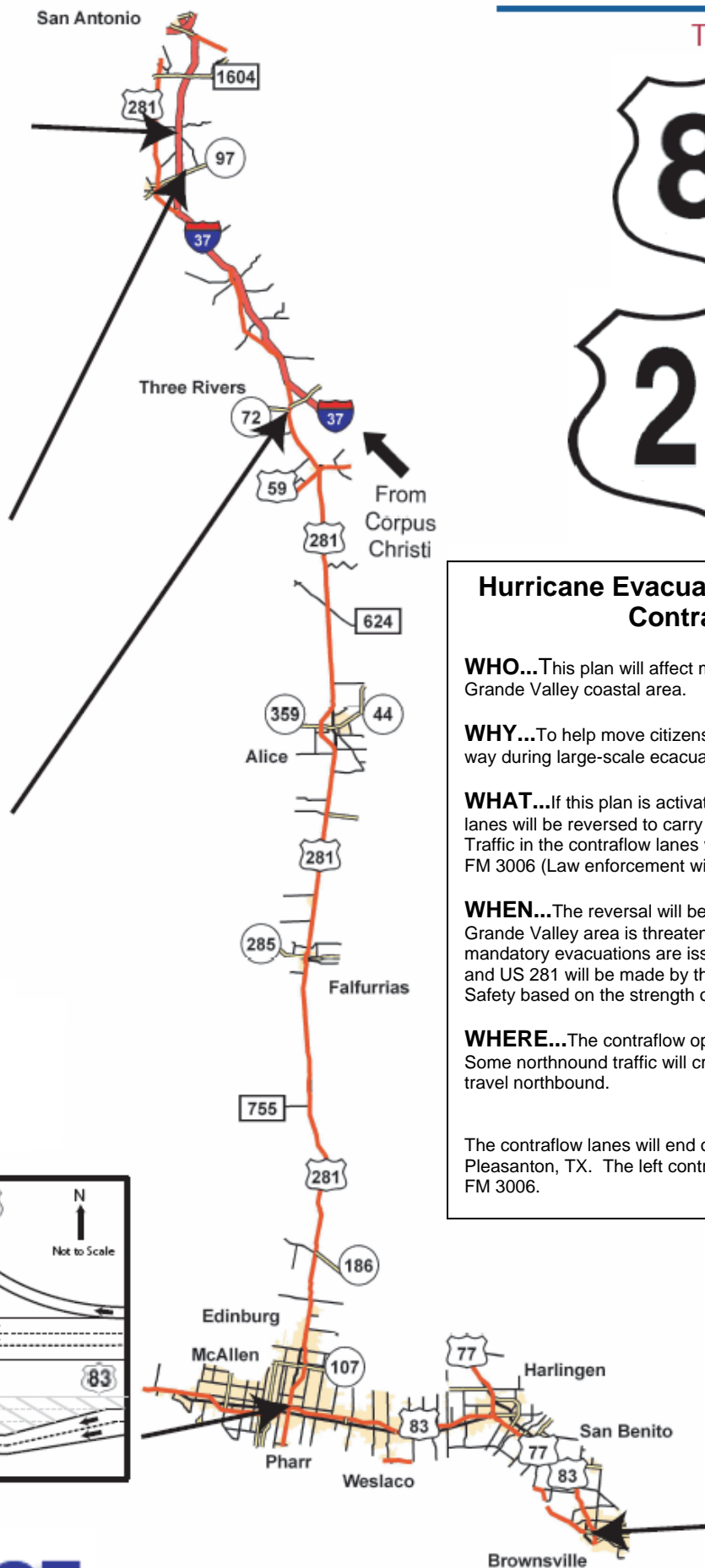
Motorist Advisory

**Evacuation Plans May or May Not
Include Activating Contraflow Lanes**



RIO GRANDE VALLEY

TEXAS



Hurricane Evacuation Route's Potential Contraflow Plan

WHO... This plan will affect motorists evacuation from the Rio Grande Valley coastal area.

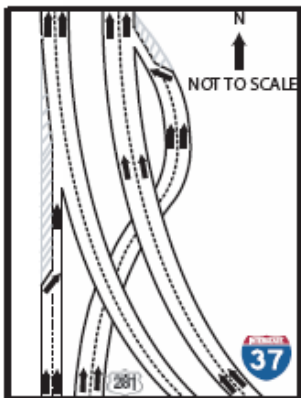
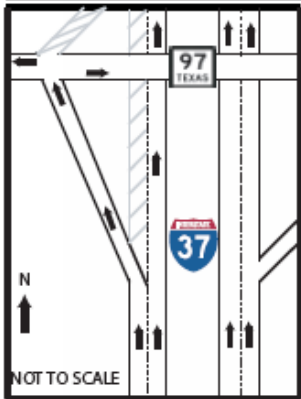
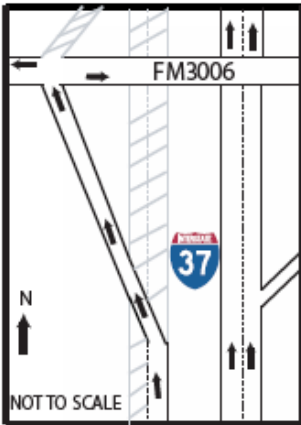
WHY... To help move citizens safely and efficiently out of harm's way during large-scale evacuations.

WHAT... If this plan is activated, US 83 and US 281 southbound lanes will be reversed to carry two lanes of northbound traffic. Traffic in the contraflow lanes will be able to exit I-37 at FM 97 and FM 3006 (Law enforcement will be posted at this exit).

WHEN... The reversal will be considered only when the Rio Grande Valley area is threatened by a major hurricane and mandatory evacuations are issued. A decision to reverse US 83 and US 281 will be made by the Texas Department of Public Safety based on the strength of the storm and projected landfall.

WHERE... The contraflow operations will begin in Brownsville. Some northbound traffic will cross over to the contraflow side to travel northbound.

The contraflow lanes will end on I-37 at SH 97 and FM 3006 near Pleasanton, TX. The left contraflow lane will be forced to exit at FM 3006.



LEGEND

No Traffic Zone

